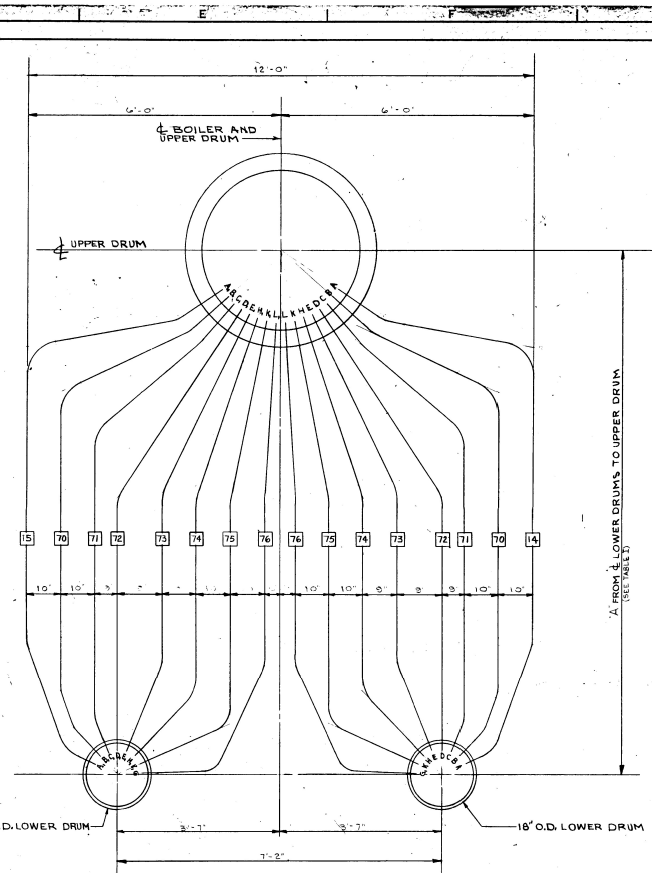
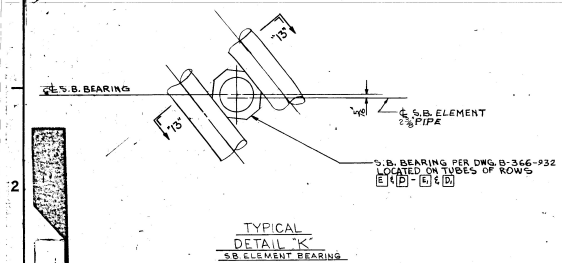


VIEW 1-1' AND
SECTION 2-2'
(SEE NOTE NO. 9)

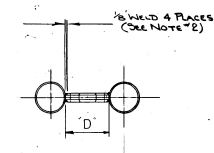


SECTION 3-3'
REAR WALL
(SEE NOTE NO. 6)

- GENERAL NOTES**
1. ALL TUBES ENTERING UPPER DRUM & LOWER DRUMS TO BE EXPANDED & FLARED.
 2. ALL WELDING TO BE DONE IN ACCORDANCE WITH WELDING PROCEDURE SPECIFICATION (WPS) DATE 1-1-1975.
 3. ALL CONSTRUCTION TO BE IN ACCORDANCE WITH A.S.M.E. BOILER & PRESSURE VESSEL CODE POWER BOILERS SECTION I.
 4. TUBE ENDS COATED WITH A BAND OF ORANGE PAINT INDICATE ENDS ENTERING UPPER DRUM.
 5. WELD A-14, A-15, OR A-16 BETWEEN TUBES TO BE WELDED ONLY FOR THE FIRST 1/2 OF THE TUBE LENGTH.
 6. FOR LOCATION OF BEARING & VIEWS 1-1 & 2-2 SEE PRESS PART ASSEMBLY DRAWING SECTION.



TYPICAL
DETAIL "K"
S.B. ELEMENT BEARING



SECTION 13-13'
TYPICAL WELDING OF BEARING TO TUBES

BEARING	TUBE SIZE
DIM.	2" O.D. 2.50 O.D. 2.50 O.D. 2.75 O.D.
"D"	4.50 4.25 4.00 3.75

REV. 1
CLIP 1
203 1-1-1975
ITEM 1-1
P.O. NO. 1-1
NO. 1-1
COM. 1-1
NOT 1-1
DATE 1-1-1975

UNIT	TABLE I											
	42" ID. UPPER DRUM						48" ID. UPPER DRUM					
PROFILE	A	B	C	E	F	G	A	B	C	E	F	G
A-14	13'-8 1/2"	10'-0 1/2"	13'-8 1/2"	13'-8 1/2"	13'-8 1/2"	13'-8 1/2"	13'-8 1/2"	10'-0 1/2"	13'-8 1/2"	13'-8 1/2"	13'-8 1/2"	13'-8 1/2"
A-15	14'-8 1/2"	10'-0 1/2"	13'-8 1/2"	13'-8 1/2"	13'-8 1/2"	13'-8 1/2"	14'-8 1/2"	10'-0 1/2"	13'-8 1/2"	13'-8 1/2"	13'-8 1/2"	13'-8 1/2"
A-16	16'-1 1/2"	11'-10 1/2"	13'-8 1/2"	13'-8 1/2"	13'-8 1/2"	13'-8 1/2"	16'-1 1/2"	11'-10 1/2"	13'-8 1/2"	13'-8 1/2"	13'-8 1/2"	13'-8 1/2"

S.W.E.C. FINAL

Pressure Parts A-14, A-15, A-16
PROFILES A-14, A-15, A-16
TYPE "A" BOILER

THIS DRAWING IS THE PROPERTY OF
CONSUMPTION ENGINEERING, INC. WINSTON, CAN.
AND IS NOT TO BE REPRODUCED OR USED IN ANY MANNER
WITHOUT THE WRITTEN PERMISSION OF CONSUMPTION ENGINEERING, INC.

DRAWING NO. 368-027-5